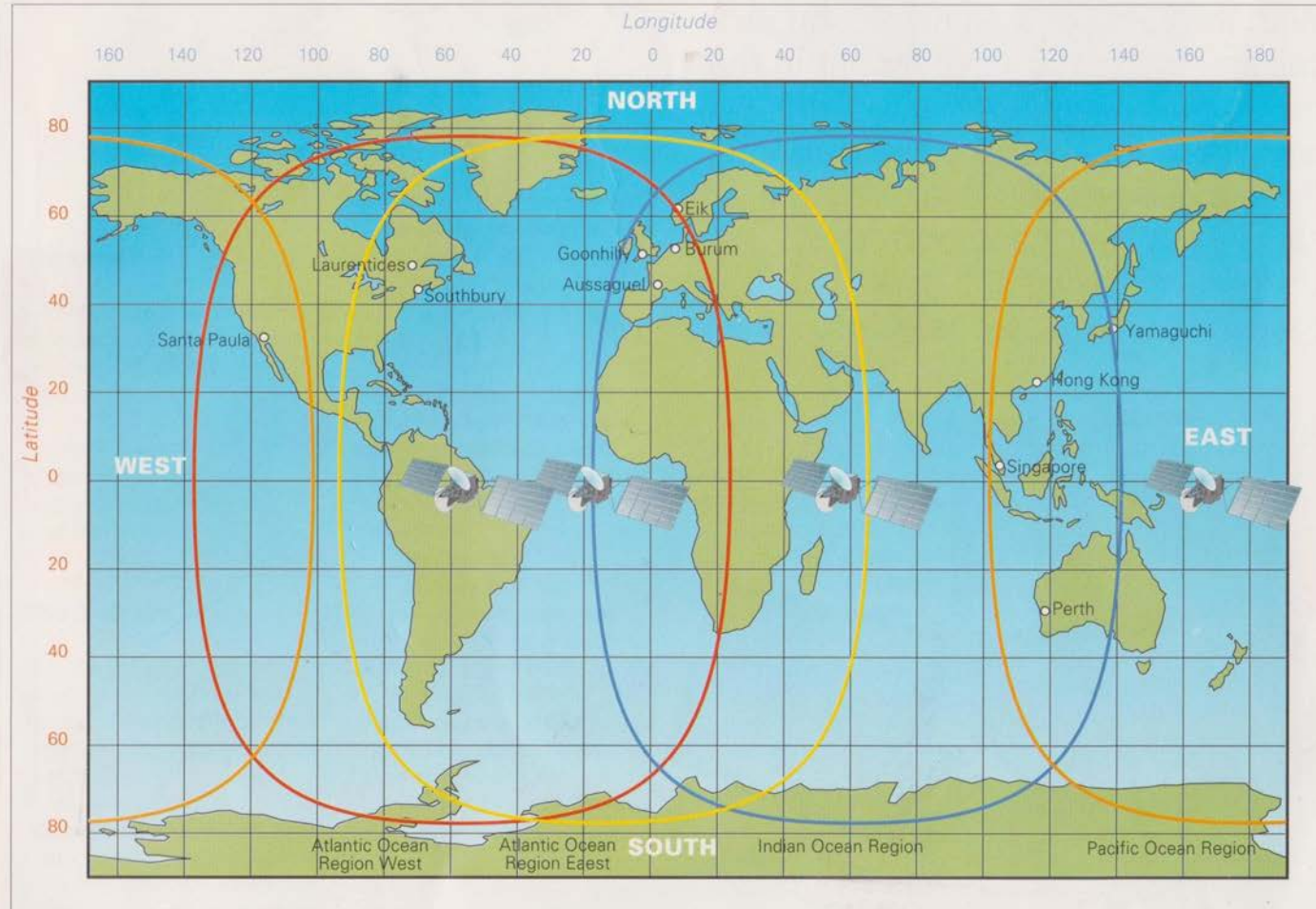


Operation

Satellite telephone SP 1600 B

Mobile phoning, faxing and data transmission across the globe.



... setzt neue Maßstäbe



Briefcase-Version des SATPHONE SP 1600.

SP 1600

Das SP 1600 ist die Herausforderung für traditionelle Kommunikationstechnologien, wie z.B. Kurzwellenfunk, wobei

- ♦ Selbstwählverkehr im weltweiten Telefonnetz (in beiden Richtungen)
- ♦ Entfernungsunabhängigkeit
- ♦ Zuverlässigkeit der Verbindungen (z.B. unabhängig von Sonnenflecken)
- ♦ Resistenz gegen atmosphärische Störungen, bedingt durch den Frequenzbereich 1.5 bis 1.6 GHz
- ♦ sichere Spracherkennung
- ♦ Fax und Datenkommunikation
- ♦ hohe Mobilität
- ♦ günstiges Preis-/Leistungsverhältnis

die entscheidenden Argumente für das SP 1600 sind.

Technische Daten	
Frequenzbereich	1530,0 - 1660,5 MHz
Modulation	PSK
Kanalabstand	10 kHz
Übertragungsart	Duplex, fehlerkorrigiert und verschlüsselt
Sendeleistung	+42 dBm (ca. 16 W)
Empfangsempfindlichkeit	-139 dBm
Stromversorgung	110 - 240 V AC oder 10,5 - 32 V DC
Leistungsaufnahme	40 W Stand-by* 120 W Sendebetrieb*
Temperaturbereich	- 25 bis + 55°C
Feuchtigkeit	bis 95% bei + 40°C
Abmessungen*	46 cm x 37 cm x 14 cm
Gewicht*	12 kg
* Briefcase-Version	

**Your worldwide connection.
Phoning, faxing and data transmission across the globe.**

With the satellite telephone, you can call any international subscriber in the public telephone network - from anywhere on earth, by self-dialling. People can call you in exactly the same way. From any normal telephone. Faxing and data transmission is also possible*.

Digital and excellent quality.

Digital transmission technology offers considerable advantages! Economy of weight and space, lower initial and operating costs and a number of advantages over traditional shortwave technology such as worldwide automatic dialling, reliable connection system, dependability, operation without the need for a radio licence or specialist knowledge, excellent transmission quality for speech, fax and data as well as a still video transmission.

Safety checks at airports

When the briefcase is exposed to X-rays, security personnel may ask questions. Should this situation arise, show the identification card which serves as a 'clearance certificate'.

**4 versions.
For any occasion**

A briefcase system for travelling businessmen, journalists or foreign correspondents, can be used in crisis areas or in development aid work.

A desk top model for embassies, research outposts, drilling rigs, company branches, building contracts abroad, etc.

A maritime system with automatic tracking aerial for professional and sporting craft and a mobile system for vehicles, e.g. for use by international forwarding agencies or bus companies.

*optional

Via satellite

Worldwide communication is possible via the 4 Inmarsat satellites. The satellites are called:

- Atlantic West (AOR-W)
- Atlantic East (AOR-E)
- Indian Ocean (IOR)
- Pacific Ocean (POR)

The charges

The charges include both satellite and earth-based connections but are only incurred when a connection has been made.

The actual tariffs can be obtained from your dealer.

The geostationary satellites appear to remain above a particular point. They can therefore be located without the aerial having to track.

The transmission signal goes first to the satellite and from there to an earth-based station. Here it is fed into the public telephone network.

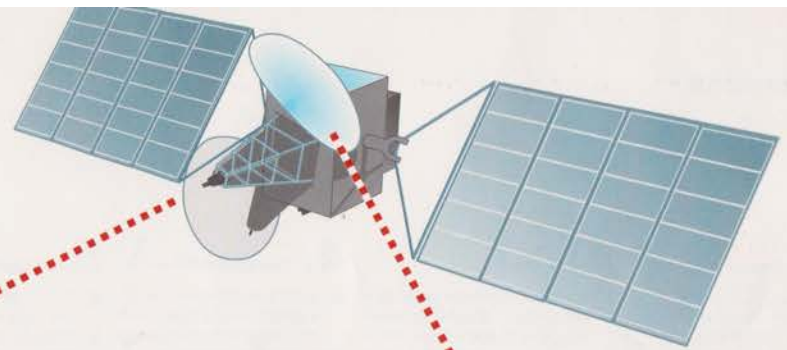
Any earth-based station within range of the selected satellite can be used (see map). Select a station in the vicinity of the person you wish to call.

The stations are charging different rates and it may well be that a longer-distance call is better value for money!

Registration

Register at once by sending the enclosed form to the Routing Organisation of your country.

The Routing Organisation (Telekom in Germany) issues the telephone number as well as numbers for fax and data transmission. Read also Commissioning Instructions.



Operation

1. Power supply.

12 to 24 V battery
Connect the enclosed cable to the car battery*, or connect the battery pack.
* Has a special vehicle socket installed by your dealer.

110 to 240 V-socket
Depending on the socket standard, this may need a plug adapter (available from specialist dealers).

2. Switching ON

A self-test takes place. Then last entered geographical position appears.

3. Aerial.

The aerial normally remains in the case lid. Fold out the compass support.

Align case lid.

The aerial (in the case lid) must be aligned to one of the 4 satellites. Obstacles such as trees, house walls etc. must not obstruct the "view" to the satellite. Clear window glass does not interfere with reception but tinted glass causes interference as does direct exposure to the sun's rays.

In poor conditions, extract aerial, pushing up the slide in the top centre of cover. Set up the aerial next to the case and align.

Connection for 110 to 240 V AC
12 to 24 V DC

4. Location.

- Look for your own location on the map. 5" accuracy is sufficient.
- Is the correct location already in the display? If so, just confirm this. Otherwise enter degree of latitude longitude.



Enter the degree of latitude, then use key [] to select [SOUTH] or [NORTH]. Enter the degree of longitude in the same way.

The available satellites are displayed:

- Select with cursor.
- Confirm with [SELECT].

The specifications for aerial alignment appear (compass and elevation).

Compass: For compass alignment of the aerial.
Elevation EL: For aerial inclination.

Azimuth (AZ):
Direction of the satellite to the geographic north pole.

5. Alignment.

- Set EL (elevation) with the support.
- Then set indicated compass value on compass ring (value must be in front of the triangle marker).
- Now turn aerial until the red section of the needle points to **N**.
- On satellite reception, READY TO USE appears and **Y** lights up.

Important:
At least 3 LEVEL-lamps must come on. This may last up to 3 minutes.

Improving reception:
- Turn aerial slightly.
- Wait briefly as the display LEVEL changes.



Incorrect entry?
Simply press EXIT and repeat entry.



Caution:
Magnetic fields or iron in the vicinity will influence the compass.

Triangle

6. Waiting for a call.

- You must be "on reception".
Display READY TO USE. The handset is on hook.
- The caller must dial according to the satellite to which you are aligned.

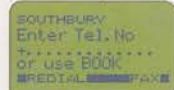
Enter here the telephone number of your satellite telephone.



7. Dialling.

READY TO USE and the selected LES (land earth station) are displayed. To change selection: Press [LES].

Normal dialling



- Enter number.
Example: 49 431 88180

International prefix at the front, also with a country, e.g. 49 for Germany. Then area code without zero - e.g. 431 for Kiel. Then the subscriber number.

Correction:
[<-] erases the last digit.

Changeover for fax or data number in advance using [FAX].

- Press [SEND] and dialling follows automatically.
Y lights up.

You can also dial with the handset in place. If you wish to do this, press [DIAL] and pick up handset to speak.

BOOK



- Press BOOK key. All alphabetic letters with entries are displayed.

Select required initial letter with cursor, then press [SELECT].

Subscriber names appear. Selection using cursor then [SELECT].

- Press [SEND] and dialling follows automatically.



REDIAL



- Press [REDIAL], the last number appears.

[NEXT] for the second last and the third last.

Press [SEND] and dialling follows automatically.

8. END.

- Put down handset or press [STOP].

Duration of the last call is displayed for 5 secs. Underneath the total call time is displayed.

- Press [OK]. The next number can be dialled.

Here the text is the same as on the page before

Satellite received. Equipment transmitting. Incoming call.

The microphone is inoperative when the loudspeaker is switched on. Therefore, the person on the other end of the line cannot hear you.

Light up for fault reporting. If > appears, the respective keys control the cursor.

Strength of received signal. At least 3 LEVEL-lamps must come on.

Dialogue keys for selecting the alternatives from the bottom display row. In this case NEXT or SEND.

Back to the last display. Right back to the start again by pressing several times.

ENTER to confirm the input of letters or the selection of menu points.

Unlocking, in order to take the handset out of the bracket.

Call up telephone book. Open selection menu.

If > appears in the display, the respective keys control the cursor.

Enters a hyphen. To enter telephone numbers.

Switch loudspeaker on/off with the handset removed.

Volume

Selection under MENU

- > Phonebook
 - Access telephone book.
- > System
 - Set date and time.
 - Volume.
 - Key beep 'Key click' on/off.
 - Earth Station (input of new earth stations).
 - Software (Version number).
- > PIN
 - Set personal identification number.

What you also need to know ...

Programming a telephone book

- Press MENU.
- Select Phonebook with cursor, then [SELECT].
- Select new entry with cursor, then [SELECT].
- Now select letter for letter with < > cursor and confirm with ENT each time.
Max. 14 characters per name. Changeover from capital/small letters using ↕
- Confirm names entered with [OK].
- Select TEL, FAX or DAT with cursor, then [SELECT].
- Enter number, then [OK].
Example: 49 431 88180

International prefix at the front. Also within a country; e.g. 49 for Germany. Then area code without zero; e.g. 431 for Kiel. Then the subscriber number.

Correction [-] erases the last number.

*Long numbers are made easier to read using * key to enter a hyphen.*

- Select earth station with cursor, then [STORE].
On auto, an earth station specified by the system is dialled.

Changing telephone book

- Press MENU.
- Select phonebook with cursor, then [SELECT].
- Select edit entry with cursor, then [SELECT].
- Select initial letters with cursor, then [SELECT].
- Select name with cursor, then [SELECT].
- Move the cursor [-] to the position to be changed and input the information from there onwards. Then [OK].
- Select TEL, FAX or DAT... as described under programming.

Erasing entry

- Press MENU.
- Select phone book with cursor, then [SELECT].
- Select delete entry with cursor, then [SELECT].
- Select initial letters with cursor, then [OK].
- Select name with cursor, then [SELECT].
- Then [DELETE] to erase the entry.

Fax and Data

The equipment must be registered for fax and data transmission (Telekom). The relevant option must also be installed - it works like this:

- Place plug in the FAX or DATA socket.
- Now follow points 1 to 6 under "operation".
- Select [FAX].
- Now dial as described in point 7.
Here you can also use [REDIAL] or the telephone BOOK
- Start fax or data transmission.
Refer to instructions for the fax equipment or software for data transmission.

- Only put down the handset when the transmission is complete.

Aborting

Abort operations by pressing EXIT.

Switching OFF

To transport:

- **Attention:** First switch off.
- Then disconnect power supply.
- Lock aerial in case lid.

Stow away safely any accessories (e.g. fax equipment).

Hagenuk GmbH
Postfach 1149
D-24100 Kiel
Phone (431) 88 18 - 0
Telefax (431) 88 18 - 4306

Part number for ordering SF65.001.007-00A.0Z

What does it mean if...?

- ...Connection to satellite lost is displayed? - The connection to the satellite is interrupted, e.g. due to shading or rotation of the aerial.
- ...No communication channel available is displayed? All the satellite channels are currently engaged.
- ...System Update - please wait is displayed? - automatic data updates are being exchanged between the satellite and the telephone. This process can take up to 2 minutes.
- ...Error in satellite link ...Call clear by inmarsat ...Call failed is displayed? - Try again.
- ...The red display lamp is on
Fault warning. - Switch the equipment off and on again. If the fault warning occurs again: inform Service Department.

Setting numerical code on case lock

- Open lid of case.
- First move the lever on the inside in the direction of the numbers, then upwards.
- Set required numbers (take care to memorize it).
- Push the lever on the inside down again, then push it away from the numbers.
- Your secret code is thus stored.

Technical details

Transmission frequencies	1631.5 to 1660.5 MHz
Reception frequency	1530.0 to 1559.0 MHz
Transmit power	42dBm
Power supply	110 - 240 V AC, 50/60 Hz approx. 140 V A 10.5-32VDC, approx. 120 W
Temperature range	-25 to 55 °C
Weight	8.7 kg

Accessories

AC cable	2716.410
DC cable	3001.039
Operation Manual	
Optional:	
Interface Data/Fax	DFI 1600
Battery Pack	BP 1600
Flight case	FC 1600

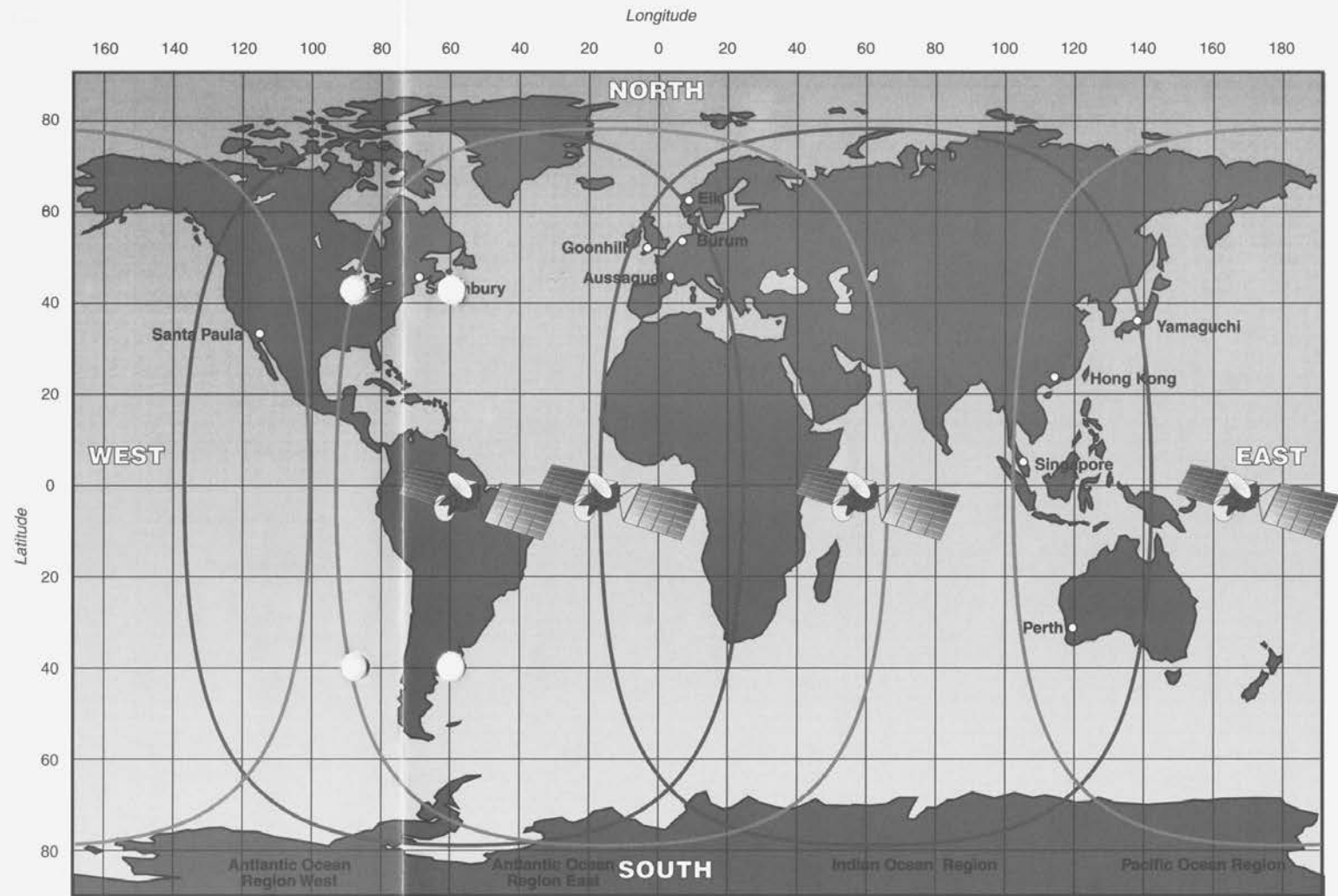
In the event of sale or theft

Report change of ownership or cancel registration of satellite telephone immediately to the Routing Organisation where the equipment has been registered.

This is the fastest way you can prevent telephone calls being made at your expense.

In case of theft please call Inmarsat:
United Kingdom
(71) 728 -1020

Land Earth Stations and coordinates



At a glance

Satelliten telephone SP 1600 B

Reference locations and coordinates across the globe.

Reference locations and coordinates

Coordinates

The satellite telephone requests you to input the location. There are two ways of finding out the coordinates:

- you search for them on the map,
- or you use the coordinates of the nearest location from this list.

International dialling code

After each country code, is the abbreviated international dialling code in brackets.

On the SP 1600 B, use only the abbreviated international dialling code.

For information: an international dialling code always consists of two parts. In the case of 00 49 for Germany, for example, the first part (00) is the "exit code" from the dialling country and the second (49) the "access code" into the other country. As you are transmitting directly to the satellite, you need only the second part.

Compass declination

Magnetic North and geographical North do not coincide. This leads to a compass declination, depending on the location. - The value shown on the display of the SP 1600 B (compass) is already corrected.

The position in relation to geographical North (azimuth) is also displayed for information.

Caution: Iron in the vicinity will affect the compass!

Afghanistan (Operator)

Chahar Borjak	30 N 62 E
Feyzabad	37 N 71 E
Herat	34 N 62 E
Kabul	35 N 69 E

Alaska (1)

Anchorage	61 N 150 W
Barrow	71 N 157 W
Bethel	61 N 162 W
Cambridge Bay	69 N 105 W
Inuvik	68 N 134 W
Nome	65 N 165 W
Norman Wells	65 N 127 W
Skagway	59 N 135 W
Unalaska	54 N 167 W

Albania (355)

Tirana	41 N 20 E
--------	-----------

Algeria (213)

Béchar	32 N 2 W
Constantine	36 N 6 E
Chenachane	26 N 4 W
Ghardaia	33 N 4 E
Illizi	26 N 8 E
In Salah	27 N 2 E
Ouallene	25 N 1 E
Tamanrasset	23 N 6 E
Tindouf	28 N 8 W

American Samoa (684)

Andorra (33)

Angola (244)

Cacólo	10 S 19 E
Dalatando	9 S 15 E
Folgares	15 S 15 E
Mavinga	26 S 20 E

Anguilla (1)

Antarctica

Budd Coas	67 S 113 E
Dumont d'urville	67 S 140 E
Mawson	73 S 68 E
McMurdo	78 S 166 E
Mirnyy	67 S 83 E
Molodeznaja	68 S 47 E
Port Lockroy	65 S 64 E
Scott Base	78 S 166 E
Showa	69 S 40 E
Vahsel Bay	78 S 35 E

Antigua and Barbuda (1)

Argentina (54)

Bahía Blanca	29 S 62 W
Buenos Aires	35 S 58 W
Calafate	50 S 72 W
Comodoro Rivadavia	46 S 68 W
Las Lajas	39 S 70 W
Mendoza	33 S 69 W
Resistencia	27 S 59 W
Saita	25 S 65 W
Santa Fe	32 S 61 W
Santiago del Estero	28 S 64 W
Telsen	42 S 67 W

Aruba (297)

Ascension (247)

Australia (61)

Adelaide	35 S 139 E
Alice Springs	24 S 134 E
Brisbane	28 S 153 E
Cairns	17 S 146 E
Carnarvon	25 S 114 E
Cunnamulla	28 S 146 E
Darwin	12 S 131 E
Forrest	31 S 128 E
Hay	34 S 144 E
Iron Range	13 S 143 E
Kalgoorlie	31 S 121 E
La Grange	19 S 122 E
Melbourne	38 S 145 E
Menzie	30 S 121 E
Nullagine	22 S 120 E
Oodnadatta	28 S 135 E
Perth	32 S 116 E
Ranken Store	20 S 137 E
Richmond	21 S 143 E
Rockhampton	23 S 151 E
Sydney	34 S 151 E
Tarcoola	31 S 135 E
Wave Hill	17 S 131 E
Wyndham	15 S 128 E

Austria (43)

Salzburg	48 N 13 E
----------	-----------

Bahamas (1)

Bahrain (973)

Bangladesh (880)

Chittagong	22 N 92 E
Dacca	24 N 90 E

Bahrain Qatar (973)
Ad-Dawhah 25 N 52 E**Barbados (1)****Belgium (32)****Belize (501)**

Belmopan 17 N 89 W

Benin (229)

Sokodé 9 N 1 E

Bhutan (Operator)

Thimbu 27 N 90 E

Bolivia (591)La Paz 17 S 68 W
Magdalena 13 S 64 W
Puerto Rico 11 S 68 W
Santa Cruz 18 S 63 W
Tupiza 21 S 66 W**Botswana (267)**Maun 20 S 23 E
Shoshong 23 S 27 E
Tshabong 26 S 22 E**Brazil (55)**Altamira 3 S 52 W
Aruana 15 S 51 W
Belém 1 S 48 W
Bôca do Acre 9 S 67 W
Brasília 16 S 44 W
Campina Grande 7 S 36 W
Campo Grande 20 S 55 W
Caracarái 2 N 61 W
Corumbá 19 S 58 W
Cruzeiro do Sul 8 S 73 W
Florianópolis 7 S 43 W
Fortaleza 4 S 39 W
Governador Valadares 19 S 42 W
Gradaús 8 S 51 W
Humaitá 8 S 63 W
Manaus 4 S 60 W
Mineiros 18 S 53 W
Natividade 12 S 48 W
Parintins 3 S 57 W
Pôrto Alegre 30 S 51 W
Riachão 7 S 47 W
Rio de Janeiro 23 S 43 W
Salvador 13 S 39 W
Santo Ângelo 28 S 54 W
São Luís 3 S 44 W
Sao Paulo de Olivença 4 S 69 W
São Paulo 24 S 47 W
Serra do Navio 1 N 52 WUaupés 0 S 67 W
Utariiti 13 S 58 W
Vitória da Conquista 15 S 41 W**British Virgin Islands (1)****Brunei (673)**

Bandar Seri Begawan 5 N 115 E

Bulgaria (359)

Plovdiv 42 N 25 E

Burkina Faso (226)**Burma**Mandalay 22 N 96 E
Putao 27 N 97 E
Rangoon 17 N 96 E**Burundi (257)**

Bujumbura 3 S 29 E

Cambodia

Phnum Pénh 12 N 105 E

Cameroon (237)Garoua 9 N 13 E
Yaoundé 4 N 12 E**Canada (1)**Arctic Bay 73 N 85 W
Baffin Island 68 N 70 W
Baker Lake 62 N 96 W
Battle Harbour 52 N 56 W
Bella Coola 52 N 127 W
Cape Dorset 64 N 77 W
Carcross 60 N 135 W
Cassiar 59 N 130 W
Channel-Port-aux-Basques 48 N 59 W
Charlottetown 46 N 63 W
Chicoutimi 48 N 71 W
Churchill 59 N 94 W
Clinton 51 N 122 W
Clyde 70 N 69 W
Coppermine 68 N 115 W
Coral Harbour 64 N 83 W
Dundas Pen. 75 N 112 W
Edmonton 54 N 113 W
Fort Chimo 58 N 58 W
Fort Franklin 65 N 124 W
Fort George 54 N 79 W
Fort Good Hope 66 N 129 W
Fort Mc Pherson 67 N 135 W
Fort Nelson 59 N 123 W
Fort Providence 61 N 118 W
Fort Simpson 62 N 121 WFrobisher Bay 64 N 68 W
Gagnon 52 N 68 W
Gjoa Haven 6 N 96 W
Goose Bay 53 N 60 W
Halifax 45 N 65 W
Holman Island 71 N 118 W
Hopewell Islands 58 N 78 W
Igloolik 69 N 82 W
Inuvik 68 N 134 W
Kenora 50 N 94 W
Kent Pen. 69 N 107 W
Lynn Lake 57 N 101 W
Meander River 59 N 118 W
Montreal 45 N 74 W
Nain 56 N 62 W
Norway House 54 N 98 W
Old Crow 68 N 140 W
Pelly Crossing 63 N 137 W
Pickle Crow 52 N 90 W
Pond Inlet 73 N 78 W
Port Alice 50 N 127 W
Port Radium 66 N 118 W
Poste- Mistassini 50 N 74 W
Rankin Inlet 63 N 92 W
Red Lake 51 N 94 W
Resolute 75 N 95 W
Ross River 62 N 132 W
Sabine Pen. 76 N 110 W
Sachs Harbour 72 N 125 W
Saskatoon 52 N 107 W
Schefferville 55 N 67 W
Snag 62 N 140 W
Snowdrift 62 N 111 W
South Indian Lake 57 N 99 W
Spence Bay 70 N 94 W
St. John's 48 N 53 W
Stewart 65 N 130 W
Stony Rapids 59 N 106 W
Summit Lake 54 N 123 W
Thunder Bay 48 N 89 W
Timmins 48 N 81 W
Toronto 44 N 79 W
Vancouver 49 N 123 W
Watson Lake 60 N 129 W
Whitehorse 60 N 135 W
Winnipeg 50 N 97 W**Cape Verde (238)****Cayman Islands (1)****Central Afrikan Empire (236)**Bangui 4 N 19 E
Bria 7 N 22 E
Gordil 10 N 22 E**Chad (235)**Am Timan 11 N 20 E
Koro Toro 16 N 19 E
Koumra 9 N 18 E
Njamena 12 N 15 E
Oum Chalouba 16 N 21 E
Zouar 20 N 17 E**Chile (56)**Antofagasta 24 S 70 W
Balmaceda 46 S 72 W
Concepción 37 S 73 W
Copiapó 27 S 71 W
Iquique 20 S 70 W
Osorno 41 S 73 W
Porvenir 53 S 70 W
Puerto Natales 52 S 73 W
Santiago 33 S 71 W**China (86) (excl. Taiwan)**Aershan 47 N 120 E
Akesu 41 N 80 E
Balikun 44 N 94 E
Baoshan 25 N 99 E
Beijing 40 N 116 E
Buerjin 48 N 87 E
Changdu 31 N 97 E
Changsha 24 N 116 E
Yitulihe 51 N 122 E
Chongqing 30 N 107 E
Fuzhou 28 N 116 E
Guangzhou 23 N 113 E
Haerbin 46 N 127 E
Haikou 20 N 110 E
Hong Kong 22 N 114 E
Huhehaote 41 N 112 E
Huma 52 N 127 E
Jitai 44 N 89 E
Kashi Kashgar 39 N 76 E
Kunming 25 N 103 E
Lasa 30 N 91 E
Luoyang 35 N 113 E
Mangya 38 N 91 E
Nanjing 32 N 118 E
Nanning 23 N 108 E
Pishan 37 N 78 E
Qiemo 38 N 86 E
Saga 30 N 85 E
Shanghai 31 N 122 E
Shenyang 42 N 123 E
Shenzhen 31 N 89 E
Shuanyashan 47 N 131 E
Wuhan 31 N 114 E
Wulumuqi 44 N 88 E
Xi'an 34 N 109 E
Xining 37 N 102 E
Yinchuan 39 N 106 E
Yining (Kuldja) 44 N 81 E

Yumen 40 N 98 E
Yutian 36 N 81 E
Zhaxigang 33 N 80 E

Colombia (57)

Bogotá 5 N 74 W
Cartagena 10 N 76 W
La Chorrera 1 S 73 W
Popayán 2 N 77 W

Congo (242)

Gamboma 2 S 16 E
Pointe-Noire 5 S 12 E
Ouessou 2 N 16 E

Cook Islands (682)

Costa Rica (506)

San José 10 N 84 W
Mérida 9 N 71 W
Valencia 10 N 68 W

Cuba (537)

Camagüey 21 N 78 W
La Habana 23 N 82 W

Cyprus (357)

Levkosía 35 N 33 E

Czechoslovakia (42)

Brno 49 N 17 E

Denmark (45)

Odense 55 N 10 E

Djibouti (253)

Djibouti 12 N 43 E

Dominican Republic (1)

Santo Domingo 18 N 70 W

Easter Island

Hanga Roa 27 S 109 W

Ecuador (593)

Quito 0 S 79 W

Egypt (20)

Al-Qáhirah 30 N 31 E
Aswán 24 N 33 E
Siwah 29 N 26 E

El Salvador (503)

San Salvador 14 N 89 W

Equatorial Guinea (Op.)

Bata 2 N 10 E
Ndjole 0 S 11 E

Ethiopia (251)

Addis Abeba 9 N 39 E
Asmera 15 N 39 E
Begi 9 N 35 E
Harer 9 N 42 E
Kebri Dehar 7 N 44 E

Faeroer Islands (289)

Falkland Islands (500)

Fiji (679)

Suva 18 S 178 E

Finland (358)

Jyväskylä 62 N 26 E
Sodankylä 67 N 27 E

France (33)

Marseille 43 N 5 E
Paris 49 N 2 E

French Guiana (594)

Cayenne 5 N 52 W

French Polynesia (689)

Gabon (241)

Gambia (220)

Banjul 13 N 17 W

Germany (49)

Frankfurt/ Main 50 N 9 E

Ghana (233)

Kumasi 7 N 2 W

Gibraltar (350)

Grenada (1)

Greece (30)

Athen 38 N 24 E

Greenland (299)

Angmagssalik 66 N 38 W
Etah 78 N 73 W
Godhavn 69 N 54 W
Godthåb 64 N 52 W
Julianehåb 61 N 46 W
Thule 77 N 69 W

Guadeloupe (590)

Guam (671)

Guatemala (502)

Guatemala 15 N 91 W

Guinea (224)

Conakry 10 N 14 W
Kankan 10 N 9 W

Guinea-Bissau (Operator)

Bissau 12 N 16 W

GUS (7)

Alma Ata 43 N 77 E
An'ujsk 68 N 162 E
Aral'sk 47 N 62 E
Archangel'sk 65 N 41 E
Aschabad 38 N 58 E
Astrachan 46 N 48 E
Baku 40 N 50 E
Berezniki 59 N 57 E
Beringovskij 63 N 179 E
Bodajbo 58 N 114 E
Bratsk 56 N 102 E
Buchara 40 N 64 E
Bukacaca 53 N 117 E
Buolkalach 73 N 120 E
Celkar 48 N 60 E
Chabarovsk 48 N 135 E
Chonuu 66 N 143 E
Cita 52 N 114 E
Cokurdach 71 N 148 E
Dusanbe 39 N 69 E
Dusekan 61 N 109 E
Ekonda 66 N 105 E
Gonam 57 N 131 E
Gyda 71 N 79 E
Irkutsk 52 N 104 E
Jakutsk 62 N 130 E
Karaganda 50 N 73 E
Karaul 70 N 83 E
Karaul 70 N 83 E
Kazacje 71 N 136 E
Kijev 50 N 31 E
Kirovsk 68 N 34 E
Komsomoľ'sk-na Amure 51 N 137 E

Krasnoarmejskij 70 N 172 E
Krasnojarsk 56 N 93 E
Krasnovodsk 40 N 53 E
Kujbysev 55 N 49 E
Kurgan 55 N 65 E
Lavrentija 66 N 171 E
Leningrad 60 N 30 E
Maca 60 N 118 E
Magadan 60 N 151 E
Magadan 60 N 151 E
Magnitogorsk 53 N 59 E
Matockin Sar 73 N 56 E
Minsk 54 N 28 E
Morosecnoje 56 N 156 E
Moskva 56 N 38 E
Murukta 68 N 102 E
Narjan-Mar 68 N 53 E
Nel'kan 58 N 136 E
Noril'sk 69 N 88 E
Novorybnoje 73 N 106 E
Novosibirsk 55 N 83 E
Novyj Port 68 N 73 E
Ochotsk 59 N 143 E
Odessa 46 N 31 E
Okt'abr'skoje 62 N 66 E
Olen'ok 69 N 112 E
Omsk 55 N 73 E
Omsukcan 63 N 156 E
Orsk 51 N 59 E
Ozernovskij 52 N 156 E
Pachaca 61 N 169 E
Palana 59 N 160 E
Perm 58 N 56 E
Petropavlovsk-Kamcatskij 53 N 159 E
Pol'kino 71 N 99 E
Poronajsk 49 N 143 E
Riga 57 N 24 E
Rostov-na-Donu 47 N 40 E
Sologoncy 66 N 114 E
Sos'va 64 N 62 E
Suordach 67 N 132 E
Surgut 54 N 51 E
Sverdlovsk 57 N 61 E
Syktyvkar 62 N 51 E
Tambej 72 N 72 E
Tareja 73 N 91 E
Tarko-Sale 65 N 78 E
Taskent 41 N 69 E
Tblisi 42 N 45 E
Tit'Arj 72 N 127 E
Tokko 60 N 120 E
Tuoj-Chaja 63 N 111 E
Ucami 64 N 96 E
Uchta 64 N 54 E
Udza 71 N 117 E
Uka 58 N 162 E
Ussurijsk 50 N 127 E
Ust-Belaja 66 N 173 E
Ust-N'ukza 57 N 122 E

Ust'-Nera	65 N 143 E
Ust'-Kamenogorsk	50 N 83 E
Vankarem	68 N 176 W
Verescagino	64 N 88 E
Vladivostok	43 N 132 E
Vorkuta	67 N 64 E
Zigansk	67 N 123 E
Zyr'anaka	66 N 151 E

Guyana (592)

Georgetown	7 N 58 W
Lethem	3 N 60 W

Haiti (509)

Port au Prince	19 N 72 W
----------------	-----------

Honduras (504)

Tegucigalpa	14 N 87 W
-------------	-----------

Hong Kong (852)

Hungary (36)

Budapest	48 N 19 E
----------	-----------

Iceland (354)

India (91)

Ahmadabad	23 N 73 E
Bangalore	13 N 78 E
Bombay	19 N 73 E
Calcutta	23 N 89 E
Delhi	29 N 77 E
Dibrugarh	27 N 95 E
Jabalpur	23 N 80 E
Jalpaiguri	27 N 89 E
Jodhpur	26 N 73 E
Nagpur	21 N 79 E
Patna	26 N 85 E
Raipur	23 N 91 E
Silchar	25 N 93 E
Srinagar	30 N 79 E
Varanasi	25 N 83 E
Vishakhapatnam	18 N 83 E

Indonesia (62)

Ambon	4 S 128 E
Bandung	7 S 108 E
Banjarmasin	3 S 115 E
Demta	2 S 140 E
Denpasar	9 S 115 E
Dili	9 S 126 E
Flores	9 S 121 E
Kepi	7 S 139 E
Kuching	2 N 110 E
Manado	1 N 125 E
Medan	4 N 99 E
Modowi	4 S 135 E

Padang	2 S 109 E
Palembang	3 S 105 E
Pontianak	0 S 109 E
Samarinda	1 S 117 E
Tarakan	3 N 118 E
Ujung Pandang	6 S 120 E

Iran (98)

Bampur	27 N 61 E
Bandar `Abbas	27 N 56 E
Esfahan	33 N 52 E
Kerman	30 N 57 E
Kermanshah	34 N 47 E
Mashhad	36 N 60 E
Shiraz	30 N 53 E
Tabriz	38 N 46 E
Tehran	36 N 51 E

Iraq (964)

Al-Basrah	31 N 48 E
Al-Mawsil	36 N 43 E
Ar-Rutbah	33 N 40 E
Baghdad	33 N 44 E

Ireland (353)

Dublin	53 N 6 W
--------	----------

Israel (972)

Yerushalayim	32 N 35 E
--------------	-----------

Italy (39)

Catania	38 N 15 E
Milano	45 N 9 E
Roma	42 N 12 E

Ivory Coast (225)

Bouaké	8 N 5 W
--------	---------

Jamaica (1)

Kingston	18 N 77 W
----------	-----------

Japan (81)

Kitakyusu	34 N 131 E
Kyoto	35 N 136 E
Sapporo	43 N 141 E
Tokyo	36 N 140 E

Jordan (962)

Kenya (254)

Gabun	1 S 12 E
Lodwar	3 N 36 E
Mombasa	4 S 40 E
Nairobi	1 S 37 E
Wajir	2 N 40 E

Kiribati (686)

Korea North (82)

P'yongyang	39 N 126 E
------------	------------

Korea South (850)

Soul	38 N 127 E
------	------------

Kuwait (965)

Al-Kuwayt	29 N 48 E
-----------	-----------

Laos

Louangphrabang	20 N 102 E
Saravan	16 N 106 E

Lesotho (266)

Lebanon (??)

Bayrut	34 N 36 E
--------	-----------

Liberia (231)

Monrovia	6 N 11 W
----------	----------

Libya (218)

Al-'Irq	29 N 22 E
Al-Jawf	24 N 23 E
Awbari	27 N 13 E
Banghâzi	32 N 20 E
Tarâbulus	33 N 13 E
Waw al Kabir	25 N 17 E

Liechtenstein (41)

Madagascar (261)

Diégo-Suarez	12 S 49 E
Fianarantsoa	21 S 47 E

Malawi (265)

Malaysia (60)

Kuala Lumpur	3 N 102 E
--------------	-----------

Mali (223)

Malta (356)

Marianen (670)

Marshall Islands (692)

Martinique (596)

Fort de France	15 N 61 W
----------------	-----------

Mauritania (222)

Bir Mogrein	25 N 12 W
Fdérjk	23 N 13 W
Nouakchott	18 N 16 W
Tichit	18 N 10 W

Mauritius (230)

Port Louis	20 S 58 E
------------	-----------

Mayotte (269)

Mexico (52)

Chihuahua	29 N 106 W
Ciudad de México	19 N 99 W
Durango	24 N 105 W
Ensenada	32 N 117 W
Guadalajara	21 N 103 W
Hermosillo	29 N 111 W
La Paz	24 N 110 W
Mérida	21 N 90 W
Moterrey	26 N 100 W
San Ignacio	27 N 113 W
Villahermosa	18 N 93 W

Micronesia (691)

Monaco (33)

Mongolei

Bulgan	46 N 91 E
Chatgal	50 N 100 E
Cojbalsan	49 N 115 E
Dalandzadgad	44 N 105 E
Sajnsand	45 N 110 E
Tamsagbulag	47 N 117 E
Ulaanbaatar	48 N 107 E
Ulaangom	50 N 92 E
Uliastaj	48 N 97 E

Montserrat (1)

Morocco (212)

Fés	34 N 5 W
Sidi Ifni	29 N 10 W

Mozambique (258)

Maputo	26 S 32 E
Massangena	22 S 23 E
Maúa	14 S 37 E
Sena	17 S 35 E

Myanmar (95)

Namibia (264)

Epukiro	22 S 19 E
Okaukuejo	19 S 16 E

Nauru (674)**Nepal (977)****Netherlands (31)**

Eindhoven 51 N 5E

Netherlands Antilles (599)**New Caledonia (687)**

Noumea 22 S 166 E

New Zealand (64)Auckland 37 S 175 E
Christchurch 44 S 173 E
Dunedin 46 S 171 E
Wellington 81 S 175 E**Nicaragua (505)**

Matagalpa 113 N 86 W

Niger (227)Agadez 17 N 8 E
Bilma 19 N 13 E
Chirfa 21 N 12 E
Niamey 14 N 2 E
Tahoua 15 N 5 E**Nigeria (234)**Kaduna 11 N 7 E
Maiduguri 12 N 13 E
Makurdi 8 N 9 E
Oshogbo 8 N 5 E**Northern Ireland (44)****Norway (47)**Bodø 67 N 14 E
Fagernes 61 N 9 E
Hammerfest 71 N 24 E
Tromsø 70 N 19 E**Oman (968)**Al-Jawarah 19 N 57 E
Masqat 24 N 59 E
Salalah 17 N 54 E**Pakistan (92)**Islamabad 34 N 75 O
Karachi 25 N 67 O
Multan 30 N 71 O
Panjgur 27 N 64 O**Palau (6)****Panama (507)**

Panamá 9 N 80 W

Papua New Guinea (675)Dagua 3 S 143 E
Danu 5 S 147 E
Port Moresby 10 S 147 E**Paraguay (595)**Carrera 22 S 59 W
Villarrica 26 S 56 W**Peru (51)**Arequipa 16 S 72 W
Chiclayo 7 S 80 W
Cuzco 14 S 80 W
Iquitos 4 S 73 W
Lima 12 S 77 W**Philippines (63)**Davao 7 N 126 E
Iloilo 11 N 123 E
Manila 15 N 121 E
Taytay 11 N 120 E**Poland (48)**

Lodz 51 N 19 O

Portugal (351)

Lisboa 39 N 9 W

Puerto Rico (1)

San Juan 19 N 66 W

Reunion (262)**Rhodesia**Salisbury 18 S 32 O
Bulawayo 20 S 29 O**Romania (40)**

Sibiu 46 N 24 O

Rwanda (250)

Kigali 2 S 30 O

St. Christoph and Nevis (1)**St. Helena (290)****St. Lucia (1)****St. Pierre and Miquelon (508)****St. Vincent (1)****Samoa Islands (685)**

Apia 14 S 172 W

San Marino (39)**Sao Tome and Principe (239)****Saudi Arabia (966)**Al-Jawf 30 N 40 E
Al-Madinah 24 N 40 E
Al-Ubaylah 22 N 51 E
Ar-Riyad 25 N 47 E
Ha'il 28 N 42 E
Makkah 21 N 40 E**Scotland (44)**

Glasgow 56 N 4 W

Senegal (221)Dakar 15 N 17 W
Tambacounda 14 N 14 W**Seychelles (248)**

Victoria 5 S 55 O

Sierra Leone (232)

Freetown 9 N 13 W

Singapore (65)

Singapore 1 N 104 O

Solomon Islands (677)

Honiara 9 S 160 O

Somalia (252)Hargeysa 10 N 44 O
Gardo 10 N 49 O
Mogadisho 2 N 45 O**South Africa (27)**Bloemfontein 29 S 26 O
Cape Town 33 S 18 E
Durban 30 S 31 O
East London 33 S 28 O
Kakamas 29 S 21 O
Keetmanshoop 27 S 18 O
Pietersburg 24 S 29 O**Spain (34)**Barcelona 41 N 2 O
Madrid 40 N 4 W
Oviedo 43 N 6 W**Sri Lanka (94)**

Colombo 7 N 80 O

Sudan (249)Al-Atrun 18 N 27 O
Al-Fashir 14 N 25 O
Al-Khurtûm 16 N 33 O
Bûr-Sûdan 20 N 37 O
Fangag 9 N 31 O
Jûbâ 5 N 32 O
Raga 8 N 26 O**Suriname (597)****Swaziland (268)****Sweden (46)**Ånge 63 N 16 E
Gällivare 67 N 21 E
Örebro 59 N 15 E**Switzerland (41)**

Bern 47 N 7 E

Syria (963)Al-Hasakah 37 N 41 E
Dimashq 31 N 36 E
Halab 36 N 37 E**Tahiti**

Papeete 18 S 150 W

Taiwan (886)

T'aipei 25 N 122 E

Tanzania (255)Arusha 3 S 37 E
Lilongwe 14 S 34 E
Mahenge 8 S 37 E
Malawi 12 S 35 E
Mwanza 3 S 33 E
Rungwa 7 S 32 E**Tasmania (61)**

Hobart 43 S 147 E

Thailand (66)Chiang Mai 19 N 99 E
Krung Thep 14 N 101 E
(Bangok)
Phuket 8 N 98 E

Togo (228)**Qatar (974)****Tonga (676)**

Nukualofa 21 S 175 W

Trinidad and Tobago (1)

Port of Spain 11 N 62 W

Tunisia (216)

Remada 32 N 10 E

Tunis 36 N 10 E

Turkey (90)

Erzurum 40 N 41 E

Eskisehir 40 N 31 E

Malatya 39 N 38 E

Turks and Caicos Islands (1)**Uganda (256)**

Kampala 0 N 32 E

United Arab Emirates (971)

Dubayy 25 N 55 E

United Kingdom (44)

London 52 N 1 W

United States (1)

Albuquerque 35 N 107 W

Atlanta 34 N 84 W

Bismarck 47 N 101 W

Boston 42 N 71 W

Buffalo 43 N 79 W

Butte 46 N 113 W

Cedar City 38 N 113 W

Charleston 38 N 82 W

Charlotte 35 N 81 W

Columbus 40 N 83 W

Dallas 33 N 97 W

Denver 40 N 105 W

Duluth 47 N 92 W

Eugene 44 N 123 W

Houston 30 N 95 W

Jacksonville 30 N 82 W

Las Vegas 36 N 115 W

Los Angeles 34 N 118 W

Marquette 42 N 88 W

Miami 26 N 80 W

Miles City 46 N 106 W

Millinocket 46 N 67 W

Milwaukee 43 N 88 W

Nashville 36 N 87 W

New Orleans 30 N 90 W

Odessa 32 N 102 W

Phoenix 33 N 112 W

Rawlins 42 N 107 W

Sacramento 38 N 122 W

San Antonio 29 N 99 W

Scottsbluff 42 N 104 W

Seattle 48 N 122 W

Shreveport 33 N 94 W

Sioux City 43 N 97 W

Spokane 48 N 118 W

Springfield 37 N 93 W

Toledo 42 N 84 W

Twin Falls 43 N 114 W

Washington 39 N 77 W

Wichita 38 N 97 W

Upper Volta (226)

Ouagadougou 12 N 2 W

Uruguay (598)

San Gregorio 33 S 56 W

Vanuatu (678)**Venezuela (58)**

Ciudad Guayana 8 N 63 W

Vietnam (848)

Da-nang 16 N 108 E

Ha-noi 21 N 106 E

Thanh-Pho 11 N 107 E

Ho Chi Minh 11 N 107 E

Virgin Islands (1)**Yemen (967)**

Aden 13 N 45 E

Al-Gaydah 16 N 52 E

San`a` 15 N 44 E

Say`un 16 N 49 E

Yugoslavia (38)

Sarajewo 44 N 18 E

Zaire (243)

Bumba 2 N 22 E

Kalima 3 S 27 E

Kananga 6 S 22 E

Kinshasa 4 S 15 E

Kisangani 1 S 25 E

Likasi 11 S 27 E

Manono 7 S 27 E

Mbandaka 0 N 18 E

Mungbere 3 N 29 E

Zambia (260)

Chinsali 11 S 32 E

Kalabo 15 S 23 E

Lusaka 15 S 28 E

Existing and planned Land Earth Stations 1993/94

Australia	Perth
Canada	Laurentides
France	Aussaguel
Hong Kong	Cape d'Aguilar
Japan	Yamaguchi
Netherlands	Burum
Norway	Eik
Singapore	Sentosa
UK	Goonhilly
USA	Santa Paula
USA	Southbury

Country	Country Code	Int. Dial Code	National Prefix	National Phone Format	Offset from UTC/DST						
						British Virgin Islands	1	011	1	(284)+7 digits	-4
						Brunei Darussalam	673	00	...	7 digits	+8
Afghanistan	93	00	0	9 digits	+4.30	Bulgaria	359	00	0	7 to 9 digits	+2/+3
Albania	355	00	0	3 to 9 digits	+1/+2	Burkina Faso	226	00	...	8 digits	UTC
Algeria	213	00	0	8, 9 digits	+1	Burundi	257	00	...	8 digits	+2
American Samoa	1	011	1	(684)+7 digits	-11	Cambodia	855	001, 007	0	8 digits	+7
Andorra	376	00	...	6, 8, 9 digits	+1/+2	Cameroon	237	00	...	8 digits	+1
Angola	244	00	0	9 digits	+1	Canada	1	011	1	10 digits	-5/-4
Anguilla	1	011	1	(264)+7 digits	-4	Cape Verde	238	00	...	7 digits	-1
Antigua and Barbuda	1	011	1	(268)+7 digits	-4	Cayman Islands	1	011	1	(345)+7 digits	-5
Argentina	54	00	0	10 digits	-3	Côte d'Ivoire	225	00	...	8 digits	UTC
Armenia	374	00	0	8 digits	+4/+5	Central African Rep.	236	00	...	8 digits	+1
Aruba	297	00	...	7 digits	-4	Chad	235	00	...	6, 7 digits	+1
Ascension	247	00	...	4 digits	UTC	Chile	56	1YZ0	1YZ	8 to 9 digits	-4/-3
Australia	61	0011	0	4 to 15 digits	+10/+11	China	86	00	0	5 to 12 digits	+8
Australian External Territories	672	00	0	6 digits	+11.30	Colombia	57	009/007/005	09/07/05	8, 10 digits	-5
Austria	43	00	0	4 to 13 digits	+1/+2	Comoros	269	00	...	7 digits	+3
Azerbaijan	994	00	0	8 to 9 digits	+4/+5	Congo	242	00	...	6 to 7 digits	+1
Bahamas	1	011	1	(242)+7 digits	-5/-4	Cook Islands	682	00	...	5 digits	-10
Bahrain	973	00	...	8 digits	+3	Costa Rica	506	00	...	8 digits	-6
Bangladesh	880	00	0	6 to 10 digits	+6	Croatia	385	00	0	8 to 12 digits	+1/+2
Barbados	1	011	1	(246)+7 digits	-4	Cuba	53	119	0	6 to 8 digits	-5/-4
Belarus	375	810	8	9 to 10 digits	+2/+3	Cyprus	357	00	...	8, 11 digits	+2/+3
Belgium	32	00	0	8 to 9 digits	+1/+2	Czech Rep.	420	00	...	4 to 12 digits	+1/+2
Belize	501	00	...	7 digits	-6	Dem. People's Rep. of Korea	850	00	0	3 to 10 digits	+9
Benin	229	00	...	8 digits	+1	Dem. Rep. of the Congo	243	00	0	5 to 9 digits	+1
Bermuda	1	011	1	(441)+7 digits	-4/-3	Denmark	45	00	...	8 digits	+1/+2
Bhutan	975	00	...	7 to 8 digits	+6	Diego Garcia	246	00	...	7 digits	+6
Bolivia (Plurinational State of)	591	00	0	8 digits	-4	Djibouti	253	00	...	6 digits	+3
Bosnia and Herzegovina	387	00	0	8 digits	+1/+2	Dominica	1	011	1	(767)+7 digits	-4
Botswana	267	00	...	7 to 8 digits	+2	Dominican Rep.	1	011	1	(809/829)+7 digits	-4
Brazil	55	00	0	10 digits	-3/-2						
						Guinea-Bissau	245	00	...	7 digits	UTC
Ecuador	593	00	0	8 digits	-5	Guyana	592	001	...	7 digits	-4
Egypt	20	00	0	7 to 9 digits	+2/+3	Haiti	509	00	...	8 digits	-5
El Salvador	503	00	...	7, 8, 11 digits	-6	Honduras	504	00	...	7, 8 digits	-6
Equatorial Guinea	240	00	...	6 digits	+1	Hong Kong, China	852	001	...	4, 8 to 9 digits	+8
Eritrea	291	00	0	7 digits	+3	Hungary	36	00	06	8 to 9 digits	+1/+2
Estonia	372	00	...	7 to 10 digits	+2/+3	Iceland	354	00	...	7, 9 digits	UTC
Ethiopia	251	00	0	9 digits	+3	India	91	00	0	7 to 10 digits	+5.30
Falkland Islands (Malvinas)	500	00	...	5 digits	-4/-3	Indonesia	62	001.008	0	5 to 10 digits	+7
Faroe Islands	298	00	...	6 digits	UTC/+1	Inmarsat SNAC	870	00	...	9 digits	
Fiji	679	00	...	7 digits	+12	International Freephone Service	800	8 digits	
Finland	358	00,99X	0	5 to 12 digits	+2/+3	International Networks, shared	882				
France	33	00	0	9 digits	+1/+2	International Networks, shared	883				
French Departments and Territories in the Indian Ocean	262	00	...	9 digits	+3, +4	International Premium Rate Service (IPRS)	979	9 digits	
French Guiana	594	00	...	9 digits	-3	International Shared Cost Service (ISCS)	808	8 digits	
French Polynesia	689	00	...	6 digits	-10	Iran (Islamic Republic of)	98	00	0	6 to 10 digits	+3.30/+4.30
Gabon	241	00	...	6, 7 digits	+1	Iraq	964	00	0	8 to 10 digits	+3
Gambia	220	00	...	7 digits	UTC	Ireland	353	00	0	7 to 11 digits	UTC/+1
Georgia	995	8	8	8 digits	+4	Israel	972	00,012,013,014	0	8 to 9 digits	+2/+3
Germany	49	00	0	6 to 13 digits	+1/+2	Italy	39	00	...	up to 11 digits	+1/+2
Ghana	233	00	0	5 to 9 digits	UTC	Jamaica	1	011	1	(876)+7 digits	-5
Gibraltar	350	00	...	8 digits	+1/+2	Japan	81	010	0	9 to 10 digits	+9
Global Mobile Satellite System (GMSS), shared code	881					Jordan	962	00	0	5 to 9 digits	+2/+3
Greece	30	00	0	10 digits	+2/+3	Kazakhstan	7	810	8	10 digits	+6
Greenland	299	00	...	6 digits	-3/-2	Kenya	254	000	0	6 to 10 digits	+3
Grenada	1	011	1	(473)+7 digits	-4	Kiribati	686	00	...	5 digits	+12
Group of countries, shared code	388					Korea (Rep. of)	82	001,002	0,082	8 to 11 digits	+9
Guadeloupe	590	00	...	9 digits	-4	Kuwait	965	00	...	7, 8 digits	+3
Guam	1	011	1	(671)+7 digits	+10	Kyrgyzstan	996	00	0	9 digits	+6
Guatemala	502	00	...	8 digits	-6						
Guinea	224	00	...	8 digits	UTC						

Lao P.D.R.	856	00	0	8 to 9 digits	+7	Nauru	674	00	...	4, 7 digits	+12
Latvia	371	00	...	7, 8 digits	+2/+3	Nepal	977	00	0	8 to 9 digits	+5.45
Lebanon	961	00	0	7 to 8 digits	+2/+3	Netherlands	31	00	0	9 digits	+1/+2
Lesotho	266	00	...	8 digits	+2	Netherlands Antilles	599	00	0	6 to 8 digits	-4
Liberia	231	00	...	7 to 8 digits	UTC	New Caledonia	687	00	...	6 digits	+11
Libyan Arab Jamahriya	218	00	0	8 to 9 digits	+2	New Zealand	64	00	0	3 to 10 digits	+12/+13
Liechtenstein	423	00	...	7 to 9 digits	+1/+2	Nicaragua	505	00	...	8 digits	-6
Lithuania	370	00	0	8 digits	+2/+3	Niger	227	00	...	8 digits	+1
Luxembourg	352	00	...	4 to 11 digits	+1/+2	Nigeria	234	009	0	7 to 10 digits	+1
Macao, China	853	00	...	7 to 8 digits	+8	Niue	683	00	...	4 digits	-11
Madagascar	261	00	...	9 to 10 digits	+3	Northern Marianas	1	011	1	(670)+7 digits	+10
Malawi	265	00	...	7, 8 digits	+2	Norway	47	00	...	5, 8 digits	+1/+2
Malaysia	60	00	0	7 to 9 digits	+8	Oman	968	00	...	7 to 8 digits	+4
Maldives	960	00	...	7 digits	+5	Pakistan	92	00	0	8 to 11 digits	+5
Mali	223	00	...	8 digits	UTC	Palau	680	011	...	7 digits	+9
Malta	356	00	...	8 digits	+1/+2	Panama	507	00	...	7, 8 digits	-5
Marshall Islands	692	011	1	7 digits	+12	Papua New Guinea	675	00	...	4 to 11 digits	+10
Martinique	596	00	...	9 digits	-4	Paraguay	595	00	0	5 to 9 digits	-4/-3
Mauritania	222	00	...	7 digits	UTC	Peru	51	00	0	8 to 11 digits	-5
Mauritius	230	00	...	7 digits	+4	Philippines	63	00	0	8 to 10 digits	+8
Mayotte	269	+3	Poland	48	00	0	6 to 9 digits	+1/+2
Mexico	52	00	01	10 digits	-6/-5	Portugal	351	00	...	9, 11 digits	UTC/+1
Micronesia	691	011	1	7 digits	+11	Puerto Rico	1	011	1	(787/939)+7 digits	-4
Moldova (Republic of)	373	00	0	8 digits	+2/+3	Qatar	974	00	...	6, 7, 10 digits	+3
Monaco	377	00	...	5 to 9 digits	+1/+2	Reserved	970				
Mongolia	976	001	0	7 to 8 digits	+8	Romania	40	00	0	9 digits	+2/+3
Montenegro	382	00	0	4 to 12 digits	+1/+2	Russian Federation	7	810	8	10 digits	+3/+4
Montserrat	1	011	1	(664)+7 digits	-4	Rwanda	250	00	...	9 digits	+2
Morocco	212	00	0	9 digits	UTC	Saint Helena	290	00	...	4 digits	UTC
Mozambique	258	00	...	8 to 9 digits	+2	Saint Kitts and Nevis	1	011	1	(869)+7 digits	-4
Myanmar	95	00	0	7 to 9 digits	+6.30	Saint Lucia	1	011	1	(758)+7 digits	-4
Namibia	264	00	0	6 to 10 digits	+1/+2	Saint Pierre and Miquelon	508	00	...	6 digits	-3/-2
Saint Vincent and the Grenadines	1	011	1	(784)+7 digits	-4	Togo	228	00	...	7 digits	UTC
Samoa	685	0	...	3 to 7 digits	-11	Tokelau	690	00	...	4 digits	-10
San Marino	378	00	...	6 to 10 digits	+1/+2	Tonga	676	00	...	5, 7 digits	+13
Sao Tome and Principe	239	00	...	7 digits	UTC	Trial of a proposed new international service, shared code	991				
Saudi Arabia	966	00	0	8 to 9 digits	+3	Trinidad and Tobago	1	011	1	(868)+7 digits	-4
Senegal	221	00	...	9 digits	UTC	Tristan da Cunha	290	00	...	4 digits	UTC
Serbia	381	00	0	4 to 12 digits	+1/+2	Tunisia	216	00	...	8 digits	+1
Seychelles	248	00	...	6 digits	+4	Turkey	90	00	0	10 digits	+2/+3
Sierra Leone	232	00	0	8 digits	UTC	Turkmenistan	993	810	8	8 digits	+5
Singapore	65	001.008	...	8 to 12 digits	+8	Turks and Caicos Islands	1	0	1	(649)+7 digits	-5/-4
Slovakia	421	00	0	4 to 9 digits	+1/+2	Tuvalu	688	00	...	5, 6 digits	+12
Slovenia	386	00	0	8 digits	+1/+2	Uganda	256	000	0	9 digits	+3
Solomon Islands	677	00	...	5 digits	+11	Ukraine	380	00	0	9 digits	+2/+3
Somalia	252	00	...	5 to 8 digits	+3	United Arab Emirates	971	00	0	8 to 9 digits	+4
South Africa	27	00	0	9 digits	+2	United Kingdom	44	00	0	7 to 10 digits	UTC/+1
Spain	34	00	...	9 digits	+1/+2	United States	1	011	1	10 digits	-5/-4
Sri Lanka	94	00	0	9 digits	+5.30	United States Virgin Islands	1	011	1	(340)+7 digits	-4
Sudan	249	00	0	9 digits	+3	Universal Personal Telecommunication (UPT)	878				
Suriname	597	00	0	6 to 7 digits	-3	Uruguay	598	00	0	4 to 11 digits	-3/-2
Swaziland	268	00	...	7 to 8 digits	+2	Uzbekistan	998	810	8	9 digits	+5
Sweden	46	00	0	7 to 13 digits	+1/+2	Vanuatu	678	00	...	5, 7 digits	+11
Switzerland	41	00	0	4 to 12 digits	+1/+2	Vatican	379	...			
Syrian Arab Republic	963	00	0	8 to 10 digits	+2/+3	Vatican	39	00	...	up to 11 digits	+1/+2
Taiwan, China	886	002	0	8 to 9 digits	+8	Venezuela (Bolivarian Republic of)	58	00	0	10 digits	-4.30
Tajikistan	992	810	8	9 digits	+5	Viet Nam	84	00	0	7 to 10 digits	+7
Tanzania	255	000	0	9 digits	+3	Wallis and Futuna	681	00	...	6 digits	+12
Telecommunications for Disaster Relief (TDR)	888					Yemen	967	00	0	6 to 9 digits	+3
Thailand	66	001	0	8, 9 digits	+7	Zambia	260	00	0	9 digits	+2
The Former Yugoslav Republic of Macedonia	389	00	0	8 digits	+1/+2	Zimbabwe	263	00	0	5 to 9 digits	+2
Timor-Leste	670	00	...	7 digits	+9						

Operating Instruction

Batterypack BP 1600 for Satellite Telephone SP 1600 B

1. Check the battery level. The battery level is indicated by the LED indicator. If the LED indicator is lit, the battery is fully charged. If the LED indicator is not lit, the battery is not fully charged.

2. Connect the battery to the satellite telephone. The battery is connected to the satellite telephone by the charging cable. The charging cable is connected to the battery pack and the satellite telephone.

3. Charge the battery. The battery is charged by the satellite telephone. The charging time is approximately 16 hours. The battery is fully charged when the LED indicator is lit.

4. Use the battery. The battery is used to power the satellite telephone. The satellite telephone is powered on by the battery. The satellite telephone is used to make and receive satellite telephone calls.

5. Maintenance. The battery should be maintained in a cool, dry place. The battery should not be exposed to high temperatures or humidity. The battery should be recharged regularly.

6. Safety. The battery should be handled with care. The battery should not be shorted or damaged. The battery should be disposed of properly.

7. Troubleshooting. If the battery does not charge, check the charging cable and the satellite telephone. If the battery does not power the satellite telephone, check the battery level and the satellite telephone.

8. Contact. For more information, contact Hagenuk Radiocommunications. The contact information is provided on the back of the battery pack.

Technical data
The battery pack is a lithium-ion battery with a nominal voltage of 3.7V and a capacity of 1600mAh. The charging time is approximately 16 hours.

Dimensions
The battery pack has a length of 100mm, a width of 30mm, and a height of 15mm. The weight is approximately 160g.

Weight
The weight of the battery pack is approximately 160g.

LED indicator
The LED indicator is used to indicate the battery level. The LED indicator is lit when the battery is fully charged and not lit when the battery is not fully charged.

Charging cable
The charging cable is used to connect the battery pack to the satellite telephone. The charging cable is connected to the battery pack and the satellite telephone.

Charging time
The charging time is approximately 16 hours. The battery is fully charged when the LED indicator is lit.

Usage
The battery is used to power the satellite telephone. The satellite telephone is powered on by the battery. The satellite telephone is used to make and receive satellite telephone calls.

Maintenance
The battery should be maintained in a cool, dry place. The battery should not be exposed to high temperatures or humidity. The battery should be recharged regularly.

Safety
The battery should be handled with care. The battery should not be shorted or damaged. The battery should be disposed of properly.

Troubleshooting
If the battery does not charge, check the charging cable and the satellite telephone. If the battery does not power the satellite telephone, check the battery level and the satellite telephone.

Technical data
The battery pack is a lithium-ion battery with a nominal voltage of 3.7V and a capacity of 1600mAh. The charging time is approximately 16 hours.

Dimensions
The battery pack has a length of 100mm, a width of 30mm, and a height of 15mm. The weight is approximately 160g.

Weight
The weight of the battery pack is approximately 160g.

LED indicator
The LED indicator is used to indicate the battery level. The LED indicator is lit when the battery is fully charged and not lit when the battery is not fully charged.

Charging cable
The charging cable is used to connect the battery pack to the satellite telephone. The charging cable is connected to the battery pack and the satellite telephone.

Charging time
The charging time is approximately 16 hours. The battery is fully charged when the LED indicator is lit.

Usage
The battery is used to power the satellite telephone. The satellite telephone is powered on by the battery. The satellite telephone is used to make and receive satellite telephone calls.

Maintenance
The battery should be maintained in a cool, dry place. The battery should not be exposed to high temperatures or humidity. The battery should be recharged regularly.

Safety
The battery should be handled with care. The battery should not be shorted or damaged. The battery should be disposed of properly.

Troubleshooting
If the battery does not charge, check the charging cable and the satellite telephone. If the battery does not power the satellite telephone, check the battery level and the satellite telephone.



Radiocommunications

Please read these instructions carefully as they contain information on how to considerably extend the service life of the 18 NiCad batteries.

Caution:

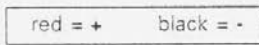
The battery pack is not charged when leaving factory. Charge it before use!

Normal mode with SP 1600 B Satphone

- Connect the battery cable from the battery pack to the battery socket on the SP 1600 B.
- The BATT. EMPTY indicator lights up briefly to show that the integrated electronics only switch through the battery power when the battery pack is connected to the Satphone.
- The SP 1600 B is now ready to operate.
- During operation, battery charge symbols 30%, 70%, 100% indicate the residual capacity.
- When the residual capacity drops below 30%, this indicator flashes and any current phone calls should be terminated. In this instance the remaining call time available would be a maximum of 10 minutes depending on the residual capacity of the battery.
- Once connected to an SP 1600 B which is switched on, the battery pack should be left switched on until the BATT. EMPTY indicator comes on. The battery is now fully discharged and can be recharged.
- If the battery pack is not connected to the Satphone it automatically switches over to energy saving status. The residual capacity is shown at the touch of a button.

Charging from a DC source

- The battery should only be recharged after it has been fully discharged. Connect the DC charging cable which comes with the battery pack to a DC source (e. g. 12 V or 24 V car battery, but watch the polarity) and to the DC charging socket. The unit operates in a voltage range of 10.8 V to 35 V.



Polarity protection

- Switching poles during charging from a DC source would short out the internal fuse. Once this has been replaced the equipment is operational and no further damage will occur.
 - Charging is monitored by a processor. It takes approximately 6 hours to charge the battery, and progress is indicated by battery charge symbols 30%, 70%, 100%.
- The 100% symbol indicates that the charging process is now complete and the battery pack can be fully utilised again.
- When the battery is charged the charger switches to maintain charge. The battery pack can remain connected to the charger for several days but should then be disconnected from the power source.

Charging from the mains

- Connect the mains cable supplied with the battery pack to the mains and the socket on the battery pack.
- The charging process begins and proceeds as in **charging from a DC source**. Depending on the local circumstances it may be necessary to use an adapter, which can generally be obtained from an electrical shop.

Further information

- The AC (mains) and DC (batt.) indicators should be constantly on during charging, otherwise no power is being supplied by the source.
- If the battery pack is not fully discharged, the integrated processor prevents further charging which is shown by the flashing 100% symbol. Should, under special circumstances, recharging be necessary, then this may be carried out by pressing the button. Recharging should only be carried out on an occasional basis as it reduces the service life of the battery (memory effect).
- If the 100% symbol continues to flash when the button has been pressed, the battery cannot be recharged for one of the following reasons:
 - a) the ambient temperature is too low (less than 0°C)
 - b) the battery temperature is too high (more than 50°C)
 - c) excess voltage has been detected in one cell.

- If the temperature is too low the battery could be fully recharged within approximately two days the maintenance voltage which is still active.
- In the event of b) and c) it would be better to wait for a few hours before connecting the pack to the charging source (cool down).

General technical information

- The battery pack is only suitable for use with the SP 1600 B. The battery can only be recharged using the voltages indicated above. Higher voltages would immediately destroy the charger.
- The permissible voltages are:**
- *Charging with DC from batteries, solar panels or other DC sources with voltages from 10.8 V to 35 V.*

When charging from a DC source, please ensure that the internal resistance is sufficiently low, as there is a higher switch-on current when the charger is switched on.

For example, solar panels would have to be buffered by a battery.

- *Charging from the mains is possible from 90 V to 265 V.*

Rating:
Mains operation 35 W;
Battery operation 35 W.

- The battery pack has a nominal output of 21.6 V and a 5 Ah capacity.

Safety Information

- Never attach the SP 1600 B connector to the charging socket on the battery pack. The charger can overheat and simultaneously discharge the battery.
- Keep the battery pack dry and away from direct sunlight.
- Do not recharge the battery and operate the SP 1600 B using the battery pack at the same time.
- If the housing is damaged do not use the unit. Take it to an electrical dealer for repair.
- Do not carry the battery pack by the connecting cable.
- If after many hours of use the battery becomes unserviceable, do not throw it away with normal domestic waste. Take it to your dealer for disposal, and if this is not possible the unit should be taken to a collection point for hazardous waste.
There are 18 NiCad cells which contain cadmium.
- Do not open the unit. This should only be done by qualified electricians.
- Whilst recharging voltages of up to 400 V can occur in the unit. All equipment connected to the mains is dangerous when opened.

Accessories

- 1 mains cable
- 1 DC cable
- 1 replacement fuse 1.25A in the fuse holder
- 1 description

Technical data

Charging unit	90 V ... 260 V AC, 50 ... 60 Hz 10.8 V ... 35 V DC
Charging time	approx. 6 hours, after that trickle charge
Output voltage	nominal 21.6 V, short-circuit proof
Nominal capacity	5 Ah
Minimum discharging voltage	18 V, automatic switch-off when falling below
Temperature range	discharging -20° ... +55°C charging +5° ... +40°C
Dimensions	222 x 240 x 60 mm
Weight	3.9 kg

Function of the LED displays

- See right side ...
- Indications as shown beside are only relevant under the precondition that:
a) no charging voltage will be supplied during discharging
b) no consumer is connected during charging.

***)

The battery pack is not been charged momentary because:

- a) it was not sufficiently discharged
- b) the cell temperature is higher 50°C or lower 0°C.
- c) a cell voltage is higher 1,6 V

See also **Further information**



DISCHARGING:



- LED off
- LED lights up
- ⦿ LED flashes
- ⊖ LED any state

Batterypack is discharged and switched off

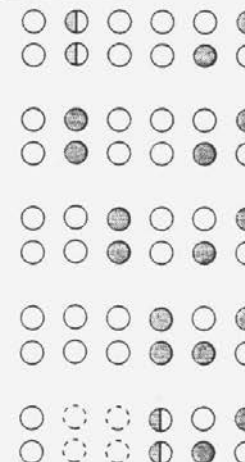
Residual capacity below 30%

Residual capacity 30%

Residual capacity 70%

Batterypack is charged

CHARGING:



Charging from mains, state <30%

Charging from DC source, state <30%

Charging from mains, state 30%

Charging from DC source, state 30%

Charging from mains, state 70%

Charging from DC source, state 70%

Charging from mains, state 100%

Charging from DC source, state 100%

AC voltage is supplied ***)

DC voltage is supplied ***)

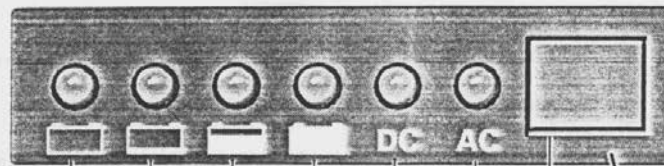
Operating Conditions

Receiving: minimum 140 minutes

Transmitting: 35 minutes

Requirement: Room temperature 21°C,
battery fully charged,
transmit power consumption 160W.

When charging from the AC mains, it is
important to use the supplied feeder lead,
otherwise no satisfactory operation can be
guaranteed!



BATT.
EMPTY

30%

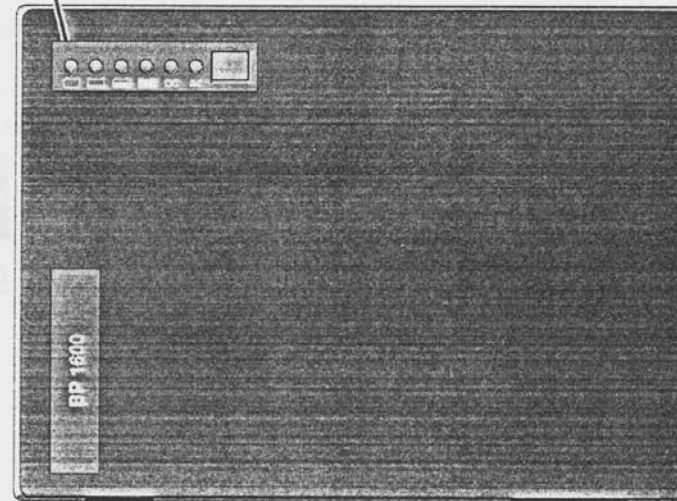
70%

100%

Charging
control
DC

Charging
control
AC

Push
button
key



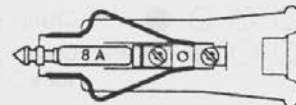
110 ... 240V ±10% AC
mains socket
with internal
fuse 1.25A

10.8 ... 35 V DC
DC-charging socket

Attention:
Fuse 8A for DC cable is
inside plug connector

1 + 3 = +
2 + 4 = -

4 1
2 3
plug connection
to Satphone



Hagenuk GmbH. • Hamburger Chaussee 25 • 24220 Flintbek
Phone (0)43 47/908-1601 • FAX (0)43 47/908-850

BUNDESAMT FÜR ZULASSUNGEN IN DER TELEKOMMUNIKATION



ZULASSUNGSURKUNDE

Zulassungsnummer : A106145D

Objektbezeichnung: SP 1600 B

Zulassungsinhaber: Hagenuk GmbH
Westring 431-451
D-24118 Kiel

Zulassungsart : Allgemeinzulassung

Befristung : Die Zulassung ist befristet bis zum Inkrafttreten endgültiger technischer Vorschriften für u.g. Objektart

Objektart : Funkanlagen für den Satellitenverteildienst (VSAT)
landmobile Sende/Empfangs-Funkanlage

Das Zulassungsobjekt wurde in Anlehnung an die Standards prETS 300 254 bzw. EN 55022 -CSFR 22- hinsichtlich der Funkverträglichkeit geprüft.

Es hält die Grenzwerte der Grenzwertklasse B ein!

Das Zulassungsobjekt wurde nicht hinsichtlich der Anforderungen zum Anschluß an öffentliche Telekommunikationsnetze geprüft.

Saarbrücken, den 07.12.93



Im Auftrag

Wiegand
Wiegand

1 Anlage

Anlage 1 zur Zulassungsurkunde
Nr. P109470D vom 15.09.93
Vorgangs-Nr.: 24912 4
Seite 1 (1)

Bedingungen und Auflagen:

Die Bedingungen und Auflagen sind der "Verordnung über die Zulassung von Telekommunikationseinrichtungen (TKZulV) vom September 1992 zu entnehmen.

Außerdem gilt:

1. Ein Abdruck dieses Bescheides ist an jedem Aufstellungsort der Funkanlage bereit zu halten.
2. Die Geräte müssen den dem Bundesamt für Zulassungen in der Telekommunikation (BZT) vorliegenden Unterlagen entsprechen.
3. Alle an die Funkanlage anschließbaren Zusatzgeräte müssen nach den VDE-Richtlinien 0871 und 0877 Teil 1 Grenzwertklasse B funkentstört sein.

Hinweis

Diese Zulassung ist keine Genehmigung zur Errichtung und zum Betrieb der Funkanlage im Sinne des § 2 des Gesetzes über Fernmeldeanlagen (FAG).

Genehmigungen zum Betreiben dieser Funkanlagen erteilt das Bundesamt für Post und Telekommunikation (BAPT).